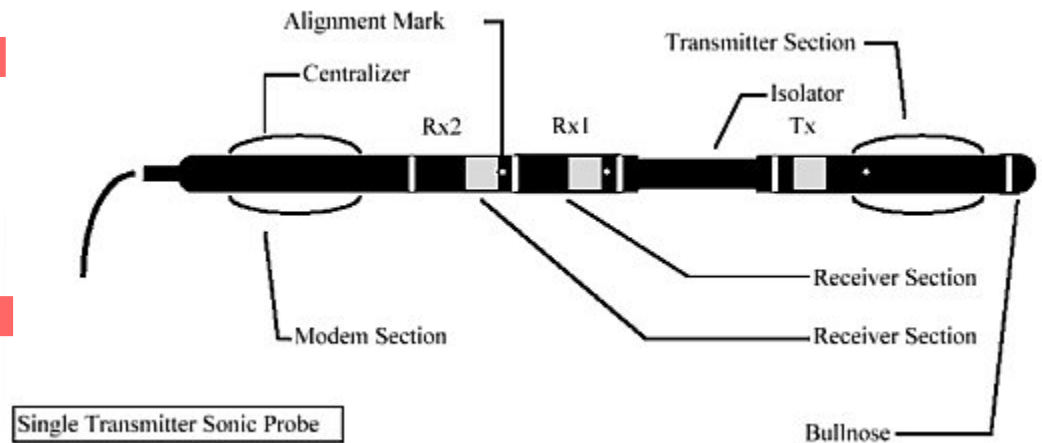


FULL WAVEFORM SONIC PROBE (2SAA-1000)



NEW! Multi-Frequency Monopole-Dipole Configuration

The new Multi-Frequency, Monopole-Dipole Full Waveform Sonic tool is compatible with MGX II Portable Digital Logging Systems and will operate on single or multiconductor wirelines. The standard probe includes transmitter - receiver spacings of 3 & 4 feet. Customers can order probes with different spacings (metric or english) and can combine it with natural gamma (2SSB-1000)

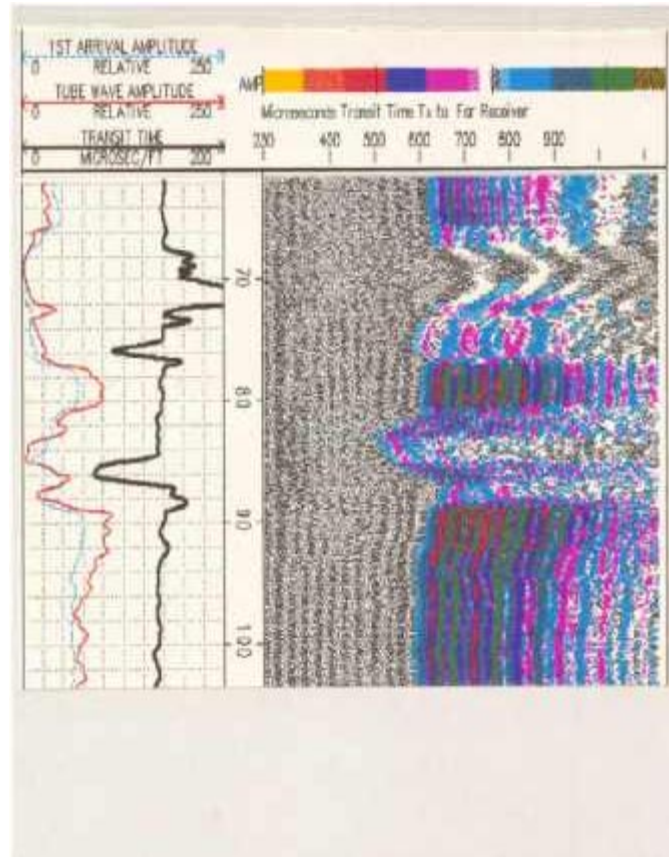
Advantages

- * Ability to record long wave train for Stonely wave analysis and the measurement of fracture aperture and permeability index.
- * The absolute value of the amplitude of the received waveform is measurable thus allowing for amplitude calibration.
- * Truly modular: other receiver and/or transmitter combinations possible up to 8 receivers and two transmitters.

Features

- * Real-time color VDL plotting
- * User-defined waveform window (up to 100 mSec)
- * Full waveform analysis, including
 - first arrival repicking
 - waveform filtering
 - stand-off correction
 - mechanical property calculations
 - velocity analysis
 - trace coherence analysis
 - reflected tube-wave analysis.
 - semblance processing
- * Individual waveform pair plotting

Diameter:	1.5 inches
Length:	105 inches (266 cm)
Weight:	20 lbs (9.09 Kg)
Transducer Freq:	configurable, 1-30KHz Monopole-Dipole configurable.
Sampling rate:	configurable, 2 - 100 μ Sec Stackable 1 - 16 trace Up to 1024 samples/trace
Wave dynamic Range:	12 bits + 4 bits gain
Max. Temp.	158°F
Max. Pressure:	3000 PSI
Calibration Accuracy:	1%
Sensitivity:	< 5 μ Sec/ft
Resolution:	\leq 1 μ Sec/ft



Sample color variable density log (VDL) with traces profiling transit time, p-wave amplitude, and tube-wave (permeability) amplitude.