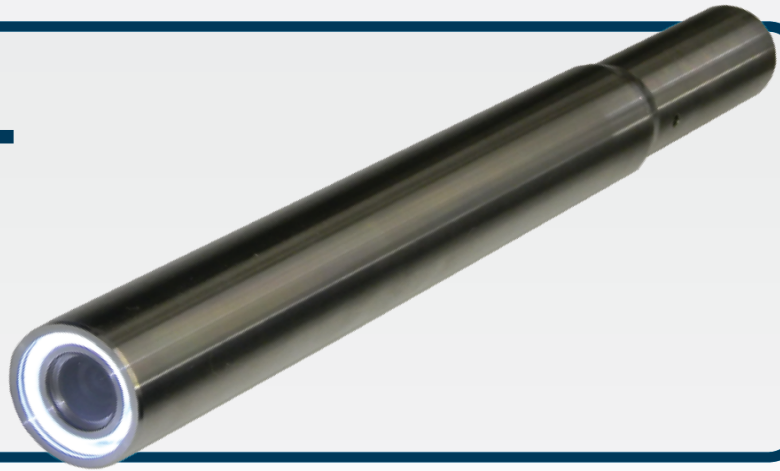


# SC-166 CAMERA

## SC-166 CAMERA

Small diameter downhole camera for water wells, boreholes and vertical shafts



The SC-166 downhole camera is designed for water wells, boreholes and vertical shafts as small as 2 inches in diameter. This camera has effective survey capabilities for 2-inch to 10-inch (5-cm to 25-cm) well diameters. The SC-166 well camera system comes equipped with a protective carry case provided for storage, adjustable centering bands, and cable head protector.

The SC-166 will work with all R-Cam 1000 and R-Cam 1300 systems. Simply disconnect the existing camera and utilize the SC-166 for smaller diameter holes or monitor wells. The robust 304 Stainless Steel housing is designed for rugged applications. The SC-166 can be sold as an accessory camera to existing systems, or as a cost effective packaged solution.



## CAMERA SPECIFICATIONS

**Camera Diameter:** 1.66 inches (4.22 cm) O.D.

**Overall Camera Length:** 16.5 inches (42 cm)

**Housing:** Stainless steel

**Lens:** BK-7 glass

**Power Supply:** Portable 12VDC battery pack and charger. Rechargeable by local current (please specify at time of order).

**Total Camera Weight:** 9 lbs (4.1 kg)

**Pressure Rating:** Pressure tested and waterproof to 500 psi

**Scanning System:** Downhole greater than or equal to 330 TVL (both NTSC and PAL)

**Operating Temperature:** 0° to 50° C (32° to 122° F)  
Recorder: Records onto a 12 VDC DVDR (please specify NTSC or PAL at time of order)

**LED Lighting:** High intensity, long life, shock proof LED lighting

**Depth Counter:** On-screen depth display measured in feet and tenths, or meters.

**Monitor:** 7-inch LCD color monitor with sunscreen viewing hood

**Winch, Reel, Motor and Cart:**  
12VDC electric powered, variable speed reel for raising and lowering camera in well. All parts are mounted on a small, two-wheeled cart with extendable 36-inch boom.